

## **First Team FoldMount46**



- Side folding wall mounted structure
- Wall to backboard extension variable from 4-6'
- Dense Southern Yellow Pine supports
- Safety support chains for added strength
- Solid square tubing construction with black powder-coat finish
- Optional bolt on padding
- Breakaway flex goals

The FoldMount46 side-folding wall mount structure simplifies the task of ordering and installing top quality side-fold wall-mounted basketball systems. With First Team's FoldMount46 there is no need to calculate exact extension before ordering. The FoldMount46 is specifically designed to provide wall-to-backboard extension distances anywhere from 4-6' during installation. This allows the unit to be "fine-tuned" to match the court markings on the floor. You will avoid costly rework and field modifications commonly caused by measurement errors. Additionally, the FoldMount46 is so versatile it can be configured to match up to any basketball backboard. So, no matter what backboard you prefer, you know the FoldMount46 is compatible.

The FoldMount46 side-folding wall mount structure simplifies the task of ordering and installing top quality side-fold wall-mounted basketball systems.

When your facility requires that the basketball goals be folded against the wall to make room for volleyball or other activities, call on First Team's FoldMount46 series. The unit swings left or right for storage close to the wall without tools or ladders! No more guesswork about which backboard and rim to choose. Compatibility is guaranteed!

Installing the FoldMount46 is simple as well. The FoldMount46 is specifically designed to provide wall-to-backboard extension distances from 4-6' during installation. This allows the unit to be "fine-tuned" to match the court markings on the floor. You will avoid costly rework and field modifications commonly caused by measurement errors.

Folding the unit is easy. Simply use the adjustment crank provided with each unit to loosen the adjustment screw. Grab the rim with the hook on the crank and tug on the unit to slide it against the wall. Then tighten the adjustment screw to secure the unit. Reverse the process to set up for play! It's that simple! Pick from First Team's broad array of package configurations to satisfy the needs of your facility. Remember, for additional safety, First Team offers optional bolt-on padding for most FoldMount46 packages.

All FoldMount46 packages come with a Lifetime Limited Warranty.

**Includes all mounting hardware and installation instructions.**

**Optional board padding, color choice.**

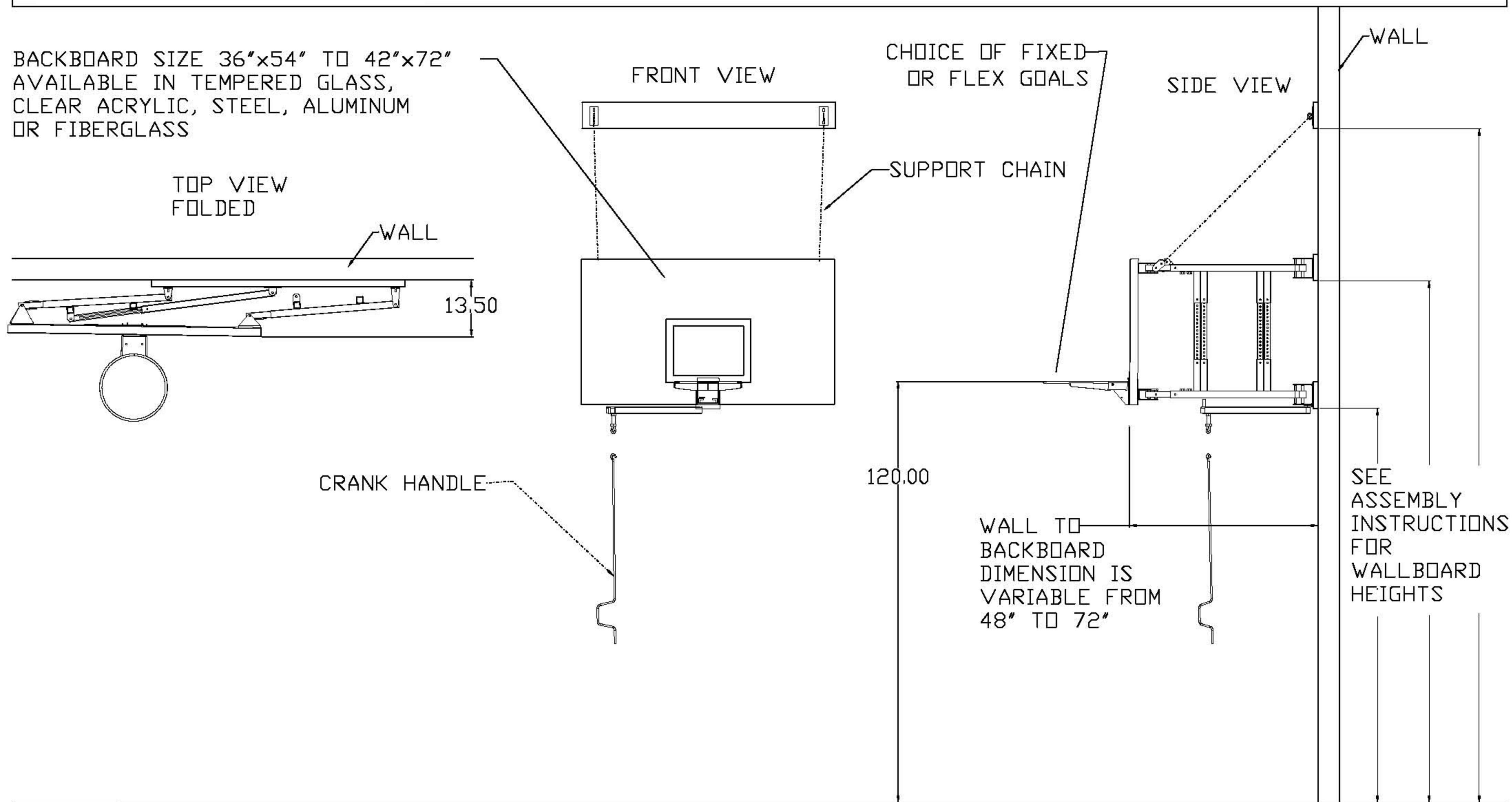
**Optional height adjuster available for 8-10' rim height adjustments.**

**Optional board padding available. I also have 2'x6' wall panels and custom column padding for boundary safety.**

FIRST TEAM SPORTS INC.  
HUTCHINSON, KS 67501

FOLDAMOUNT46 BASKETBALL GOAL  
PRODUCT SUBMITTAL

[www.InstitutionalBasketballSystems.com](http://www.InstitutionalBasketballSystems.com) | Tom Nicotera | 877.272.5430



FIRST TEAM SPORTS INC.  
HUTCHINSON, KS 67501

FT310 HEIGHT ADJUSTER  
PRODUCT SUBMITTAL

www.InstitutionalBasketballSystems.com | Tom Nicotera | 877-272-5430

