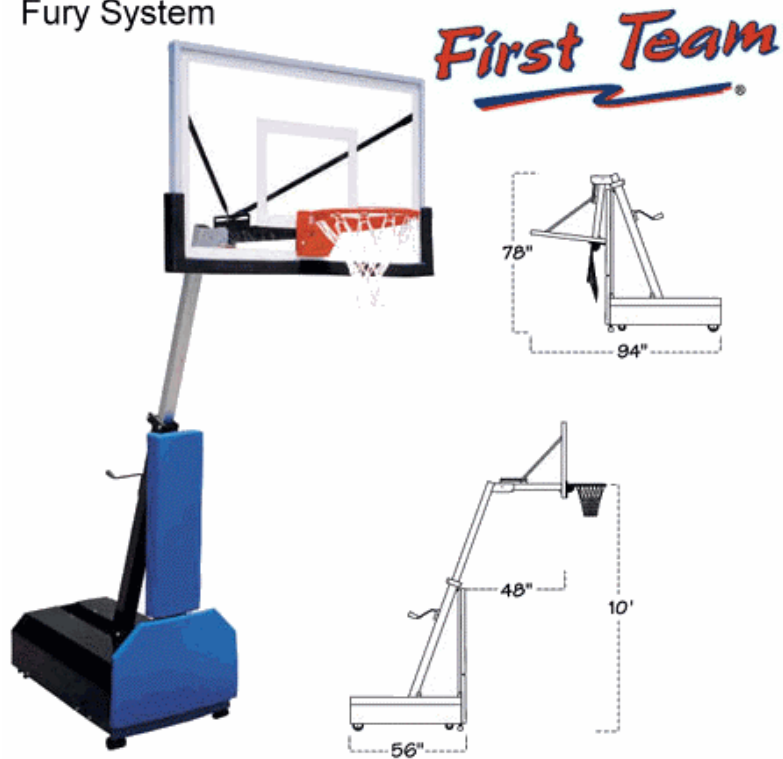


**First Team Fury III Portable Basketball System**  
Fury System



- Optional bolt-on TuffGuard backboard padding
- Rim height adjusts for smaller players
- Rim height indicator
- Direct mount goal to eliminate backboard stress
- Safety padding covers front, side and rear of base unit
- All steel components are powder coated to protect against the elements
- 8" non-marking casters lock into position for play
- Compact and easy to roll
- Post to backboard extension is 48" at 10'
- Ballast not included. 540 lbs.

**FURY III - Fury base, REQUIRES 56" OB space (better with 68"), 48" base to board extension, 36x54x1/2" clear acrylic board, heavy duty flex goal, net, base padding, choice of colors. Optional board padding available.**

The Fury portable basketball goal is designed to withstand the demands of adult recreation centers while providing the flexibility necessary for many churches and elementary grade levels. The Fury is infinitely adjustable. Simply turn the adjustment crank handle behind the unit to lower the rim height anywhere from 10' down to 6'6". The Fury's exclusive crank adjustment design is vastly superior in overall rigidity compared to similar goals using inferior "spring-slide" methods. The Fury is engineered to be extremely easy to move. One person can transport the goal by flipping the lower pad forward and rolling into position. Return pad to upright position to lock base in place for play. The extension arm can be dropped without tools to allow the Fury to pass under doorways. The backboard to base extension is 48" with the rim at regular height. This allows the Fury to sit "off-court" for player safety. Heavy padding, available in several colors, protects the player from contact with the base unit.

**BALLAST NOT INCLUDED: This system requires a recommended 540 lbs of ballast. Recommend solid concrete blocks from local home improvement center. 4"x8"x16", 2"x6"x14" blocks or like.**

PMS # are noted below each color.



*Black*

ProBLK



*Royal*

2757



*Scarlet*

1797



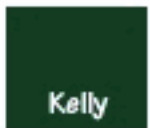
*Gold*

7408



*Purple*

518



*Kelly*

3425



*Columbia*

549



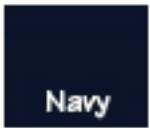
*Maroon*

483



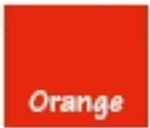
*Grey*

404



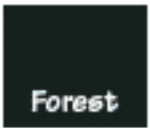
*Navy*

532



*Orange*

166



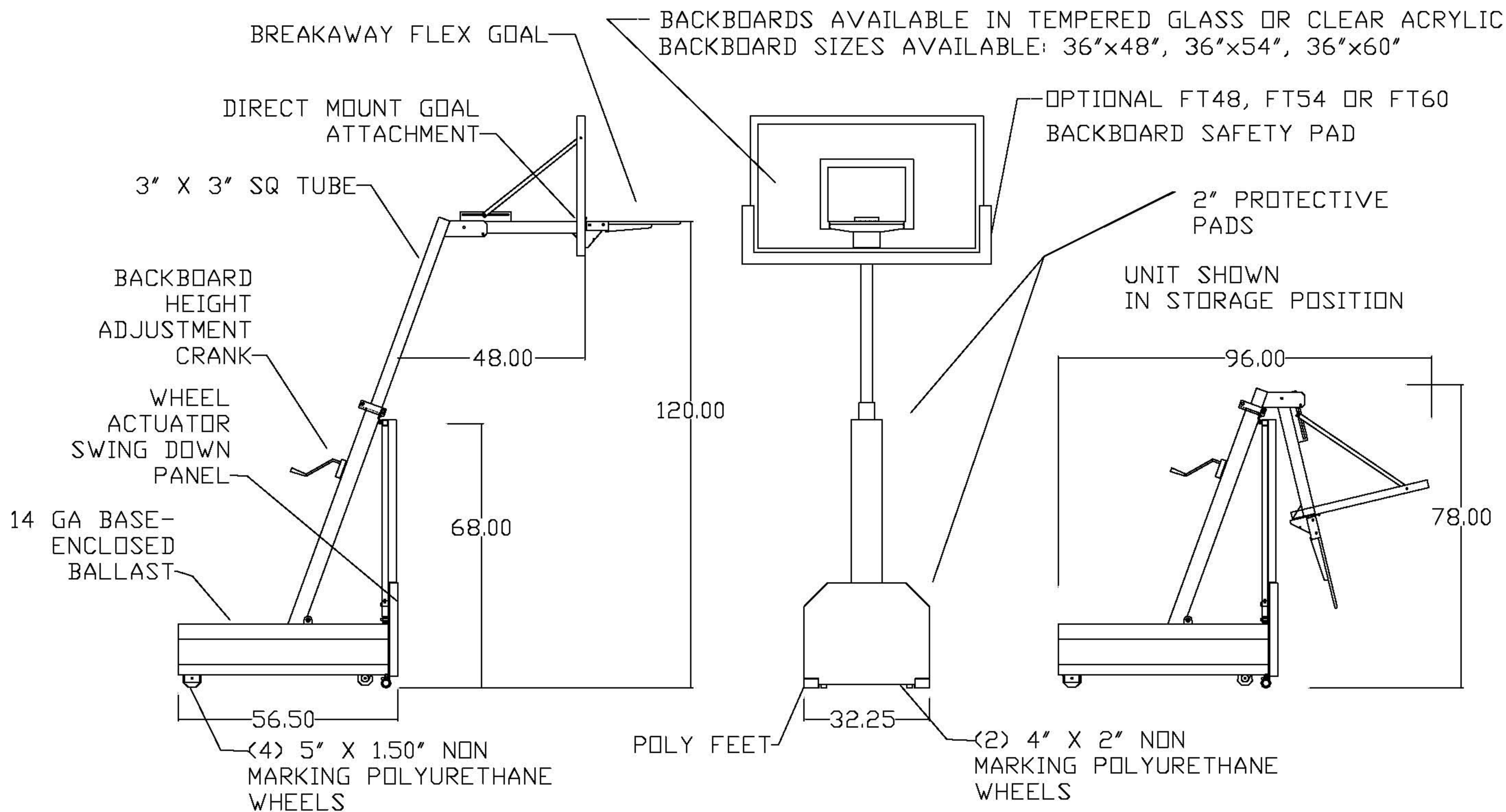
*Forest*

560

FIRST TEAM SPORTS INC.  
HUTCHINSON, KS 67501

FURY PORTABLE BASKETBALL GOAL  
PRODUCT SUBMITTAL

[www.InstitutionalBasketballSystems.com](http://www.InstitutionalBasketballSystems.com) | Tom Nicotera | 877.272.5430






More saving. More doing.™



[View Larger](#)

	Be the first to <a href="#">write a review</a> .
<a href="#">Write a review</a> for a chance to win a \$250 Gift Card.	
<a href="#">Learn More</a> .	

## Pavestone 2 In. x 8 In. x 16 In. Red Slab

Model # 74051

Store SKU # 762156

**\$1.19/EA-Each**

Not Sold Online

Sold At Your Local Store

[Add to My List](#)

- Product shown is normally carried at your local store; availability may vary.
- Local store prices may vary from those displayed.

## Description

2 x 8 x 16 Slabs are easy to use and very affordable. The perfect utility slab as well. Use it to create patios, walkways, or pathways.

- Multi Purpose Patio Slabs
- Easy Installation
- Utility Patio Stone
- Other Color Choices May Be Available
- MFG Brand Name : Pavestone
- MFG Model # : 74051
- MFG Part # : 74051

## Specifications

- **Assembled Depth (In Inches)** : 16 in
- **Assembled Height (In Inches)** : 2 in
- **Assembled Weight (In LBS)** : 20 lb
- **Assembled Width (In Inches)** : 8 in
- **Attachable** : No
- **Color / Finish** : Red
- **Energy Star Compliant** : No
- **Height** : 2 in
- **Pattern** : No
- **Weight Capacity** : 1 lb
- **Width** : 8 in


## Reviews



More saving. More doing.™



[View Larger](#)

	Be the first to <a href="#">write a review</a> .
<a href="#">Write a review</a> for a chance to win a \$250 Gift Card.	
<a href="#">Learn More</a> .	

## 8 In. x 2 In. x 16 In. Top Cap - Grey

Model # 082H0190100100

Store SKU # 384313

**\$0.88/EA-Each**

Not Sold Online

Sold At Your Local Store

[Add to My List](#)

- Product shown is normally carried at your local store; availability may vary.
- Local store prices may vary from those displayed.

## Description

Solid top cap used to finish off the top of a concrete block wall. This smooth-faced, straight-edged concrete masonry unit (CMU) is the ideal choice to enhance the design and value of your project. Precision units offer the most utility and versatility and are used primarily for fence walls and site or perimeter walls.

- Always Check Local Building Codes Before Beginning Your Project
- Easy Maintenance
- Ubc Standard No. 21-4, Grade N
- Astm C-90, Grade N
- Normal weight CMU
- Grey in color
- Solid cap block
- Precision block assumes a 3/8 In. mortar joint
- Nominal size: 8 In. width x 2 In. height x 16 In. length
- Permissible variation in overall dimensions (width, height, length) of +/- 1/8 In.
- 270 per pallet
- MFG Model # : 082H0190100100
- MFG Part # : 082H0190100100

## Specifications

- **Block Size (Width x Height x Length) :** 8x2x16
- **Color / Finish :** Gray
- **Energy Star Compliant :** No
- **R Value :** 0

## Reviews