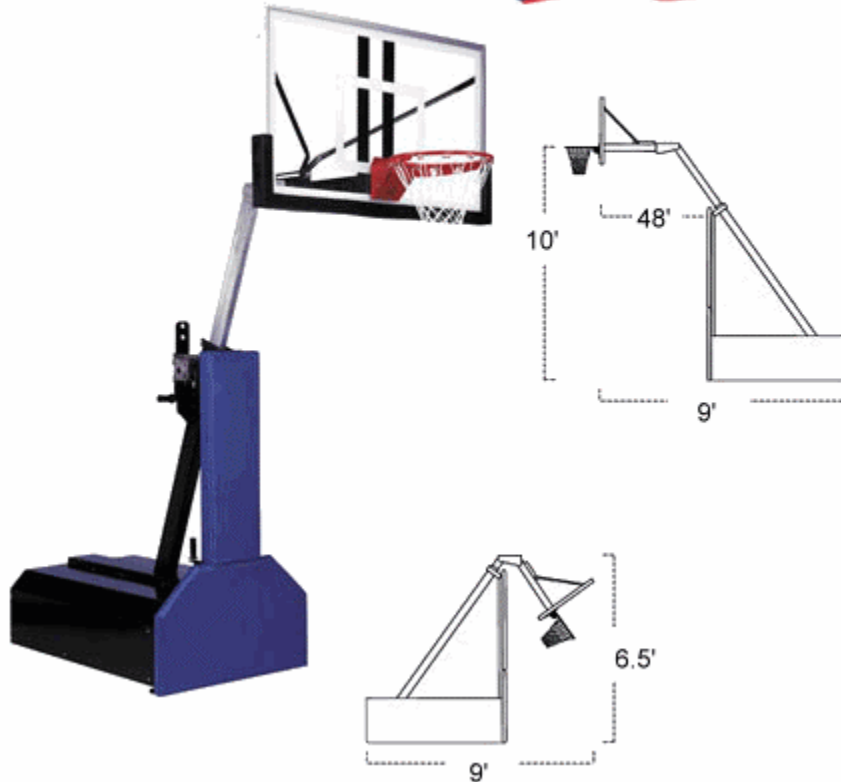


First Team

Thunder System



- Optional bolt-on TuffGuard backboard padding
- Rim height adjusts for smaller players
- Safety padding covers front, side and rear of base unit
- All steel components are powder coated to protect against the elements
- 8" non-marking casters lock into position for play
- Compact and easy to roll
- Adjustable overhang extension
- Post to backboard extension is 48" at 10'
- Ballast not included. Recommended 700 lbs.

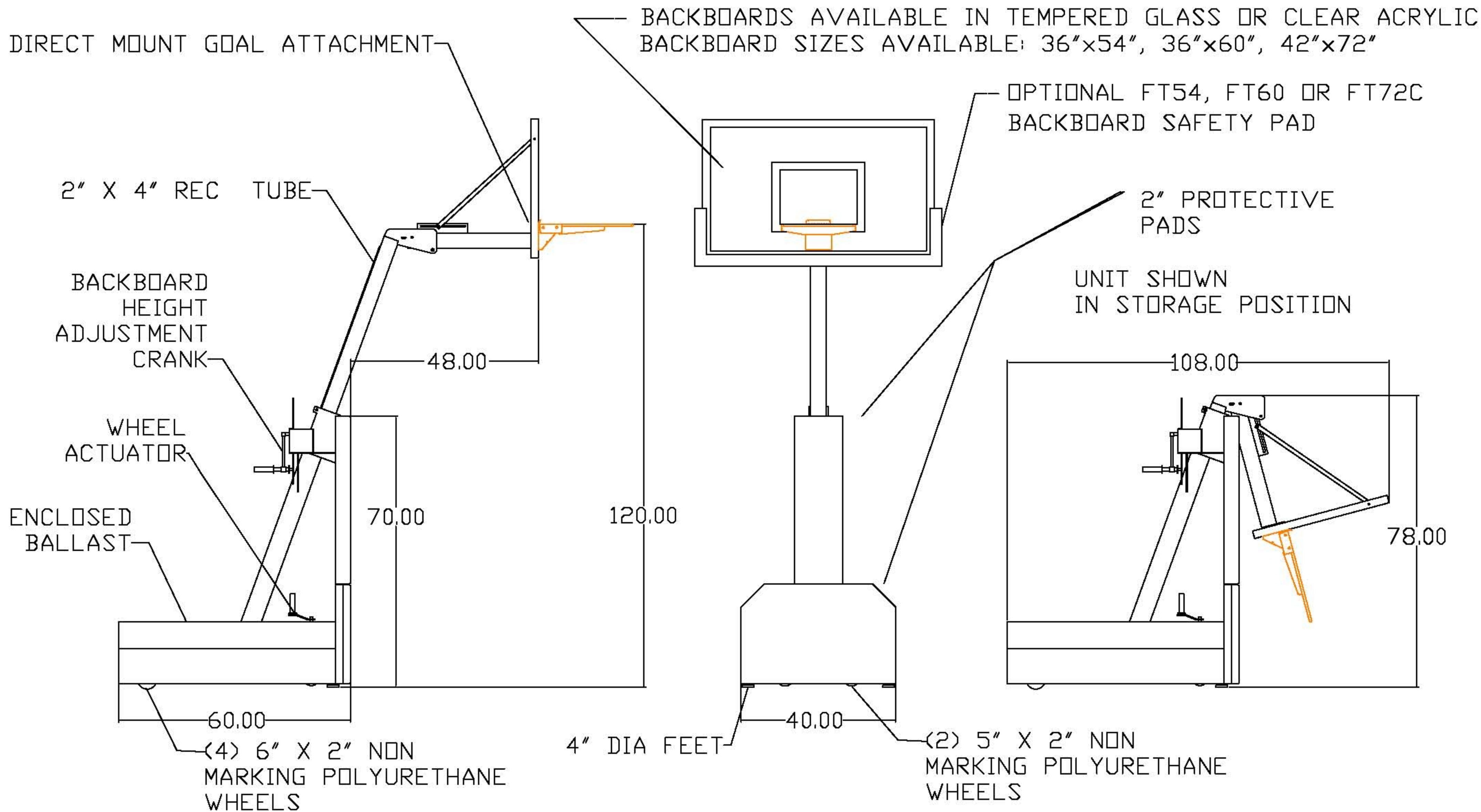
The Thunder portable basketball goal is an excellent choice for any school gymnasium, recreational complex, multipurpose facility, or church in need of a high quality portable while working within a budget. The Thunder is adjustable. Its simple to use hand crank allows for infinite height adjustments from regulation 10' down to 6'. An easy to crank adjustment handle on the backside of the unit telescopes the backboard and rim to the desired playing height. One person can easily move the Thunder portable goal. An easy to grip release crank unlocks the brake and six roller wheels contact the playing surface for smooth portability. The extension arm can be quickly dropped down to allow the unit to pass under any standard height double doors. The distance from the backboard to the base of the unit is 4' with the rim at the regulation 10' height. This allows the base of the unit to sit "off the court" for player safety. Heavy foam padding covers the entire front of the unit for additional safety. Padding is available in several colors. The unit is durable and stable enough to withstand slam dunk action and will not tip over when players hang on the rim. This allows the unit to meet an array of facilities and budget needs.

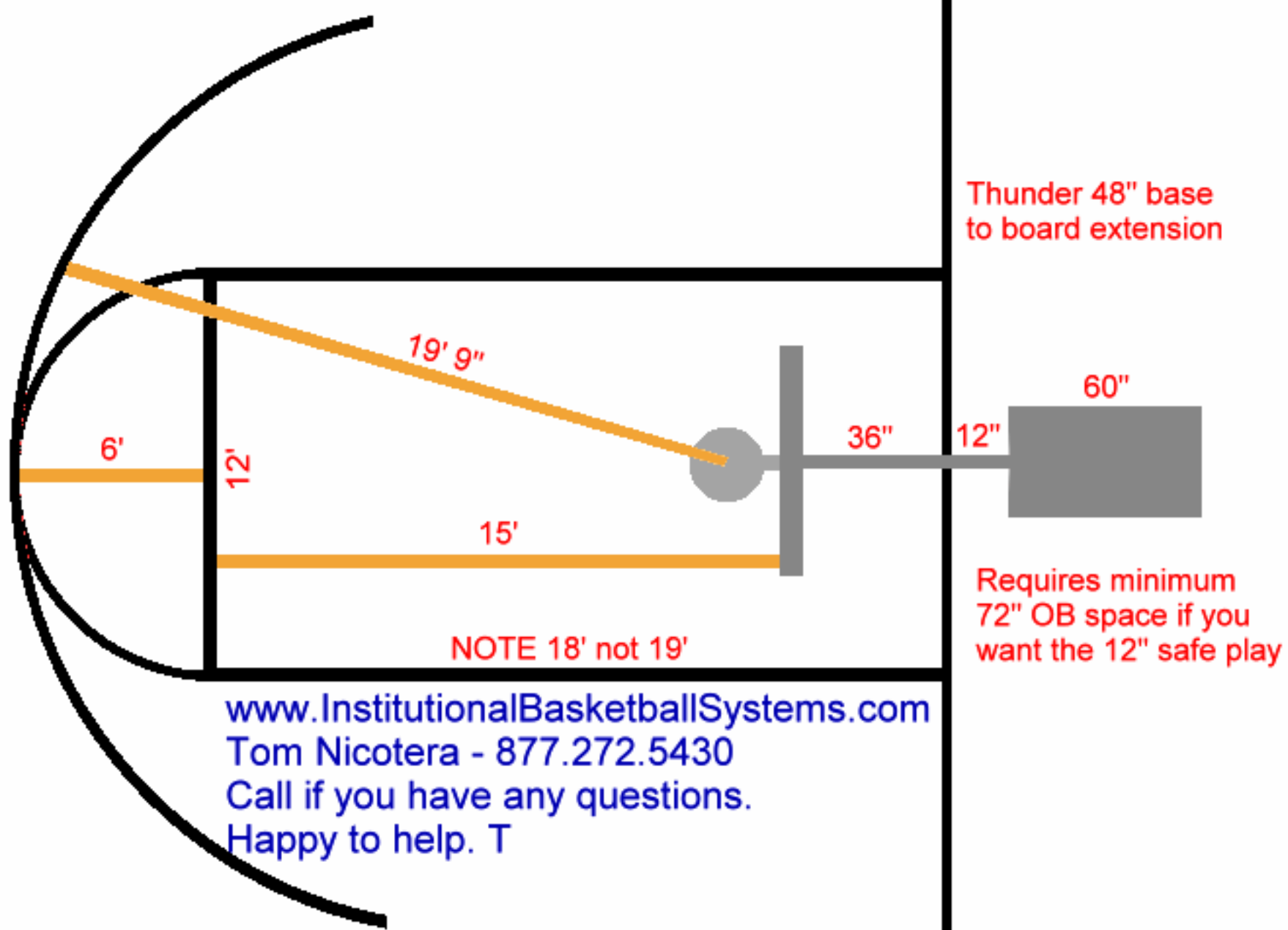
BALLAST NOT INCLUDED: This system requires a recommended 700 lbs of ballast. Recommend solid concrete blocks from local home improvement center. 4"x8"x16", 2"x6"x14" blocks or like.

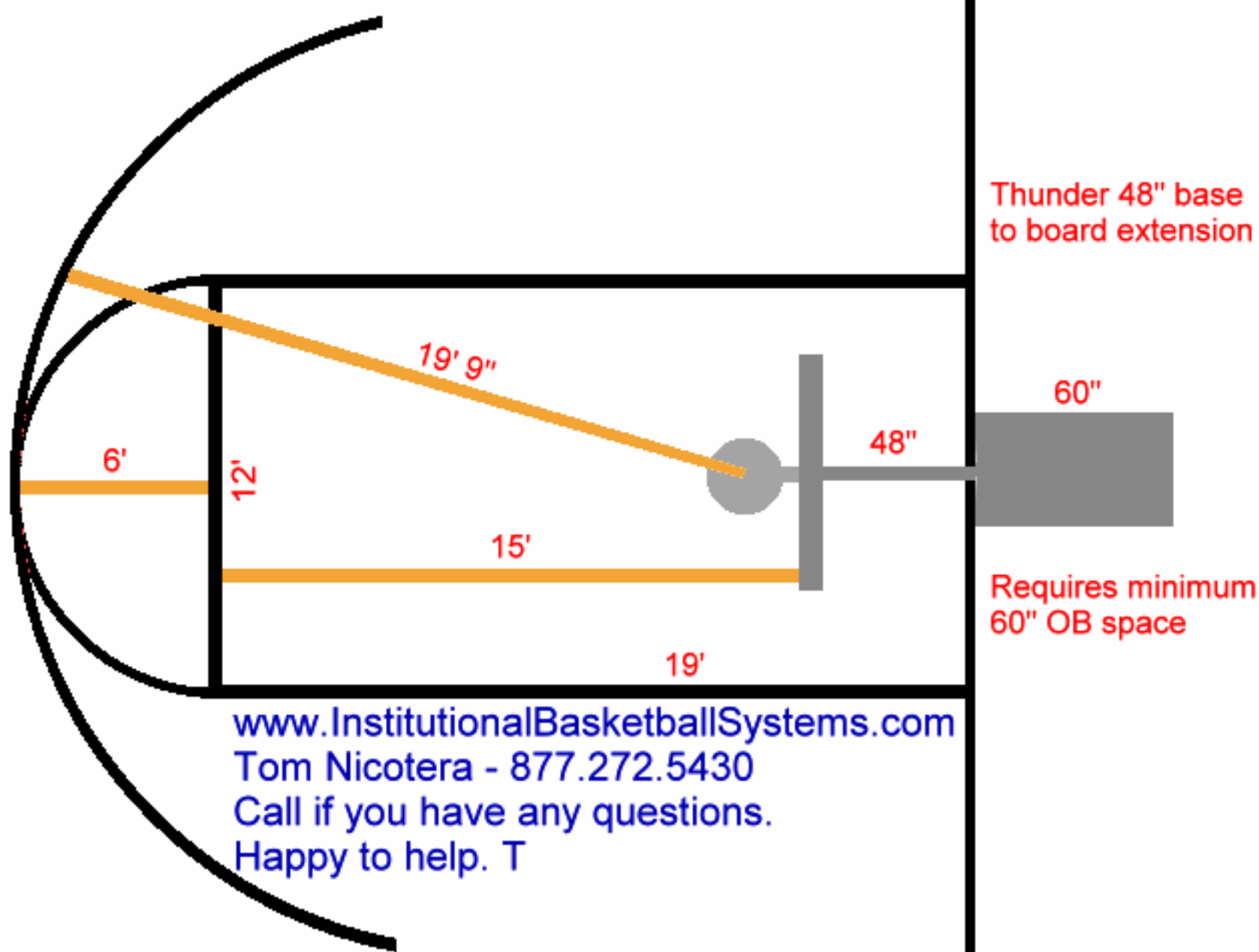
FIRST TEAM SPORTS INC.
HUTCHINSON, KS 67501

THUNDER PORTABLE BASKETBALL GOAL
PRODUCT SUBMITTAL

www.InstitutionalBasketballSystems.com | Tom Nicotera | 877.272.5430










More saving. More doing.™



[View Larger](#)

	Be the first to write a review .
Write a review for a chance to win a \$250 Gift Card.	
Learn More .	

Pavestone 2 In. x 8 In. x 16 In. Red Slab

Model # 74051

Store SKU # 762156

\$1.19/EA-Each

Not Sold Online

Sold At Your Local Store

[Add to My List](#)

- Product shown is normally carried at your local store; availability may vary.
- Local store prices may vary from those displayed.

Description

2 x 8 x 16 Slabs are easy to use and very affordable. The perfect utility slab as well. Use it to create patios, walkways, or pathways.

- Multi Purpose Patio Slabs
- Easy Installation
- Utility Patio Stone
- Other Color Choices May Be Available
- MFG Brand Name : Pavestone
- MFG Model # : 74051
- MFG Part # : 74051

Specifications

- **Assembled Depth (In Inches)** : 16 in
- **Assembled Height (In Inches)** : 2 in
- **Assembled Weight (In LBS)** : 20 lb
- **Assembled Width (In Inches)** : 8 in
- **Attachable** : No
- **Color / Finish** : Red
- **Energy Star Compliant** : No
- **Height** : 2 in
- **Pattern** : No
- **Weight Capacity** : 1 lb
- **Width** : 8 in


Reviews



More saving. More doing.™



[View Larger](#)

	Be the first to write a review .
Write a review for a chance to win a \$250 Gift Card.	
Learn More .	

8 In. x 2 In. x 16 In. Top Cap - Grey

Model # 082H0190100100

Store SKU # 384313

\$0.88/EA-Each

Not Sold Online

Sold At Your Local Store

[Add to My List](#)

- Product shown is normally carried at your local store; availability may vary.
- Local store prices may vary from those displayed.

Description

Solid top cap used to finish off the top of a concrete block wall. This smooth-faced, straight-edged concrete masonry unit (CMU) is the ideal choice to enhance the design and value of your project. Precision units offer the most utility and versatility and are used primarily for fence walls and site or perimeter walls.

- Always Check Local Building Codes Before Beginning Your Project
- Easy Maintenance
- Ubc Standard No. 21-4, Grade N
- Astm C-90, Grade N
- Normal weight CMU
- Grey in color
- Solid cap block
- Precision block assumes a 3/8 In. mortar joint
- Nominal size: 8 In. width x 2 In. height x 16 In. length
- Permissible variation in overall dimensions (width, height, length) of +/- 1/8 In.
- 270 per pallet
- MFG Model # : 082H0190100100
- MFG Part # : 082H0190100100

Specifications

- **Block Size (Width x Height x Length) :** 8x2x16
- **Color / Finish :** Gray
- **Energy Star Compliant :** No
- **R Value :** 0

Reviews